

SAFA – FIRE & SMOKE DAMPER ACTUATOR

15 Nm | 2-POINT CONTROL | WITHOUT SPRING RETURN



The appearance of the product may differ from the illustration. Technical specifications are subject to change.

SASA...15S SERIES

SASA Non-Spring Return actuators are developed for use with fire and smoke damper. The actuator motorized the damper or other devices when power on.

- Torque: 15 Nm
- Damper size 3.0 m²
- Power supply 24 V_{AC/DC} and 230 V_{AC}
- Shaft dimensions – form fit 12 mm square
- Adapter supplied for from fit 8 or 10 mm square
- Direction of rotation selectable by reversing actuator during installation
- Actuator with 1 m connection cable.
- 2 Fixed auxiliary switches (SPDT)
- Manual override by crank handle when required
- Anti-rotation bracket provided for stability

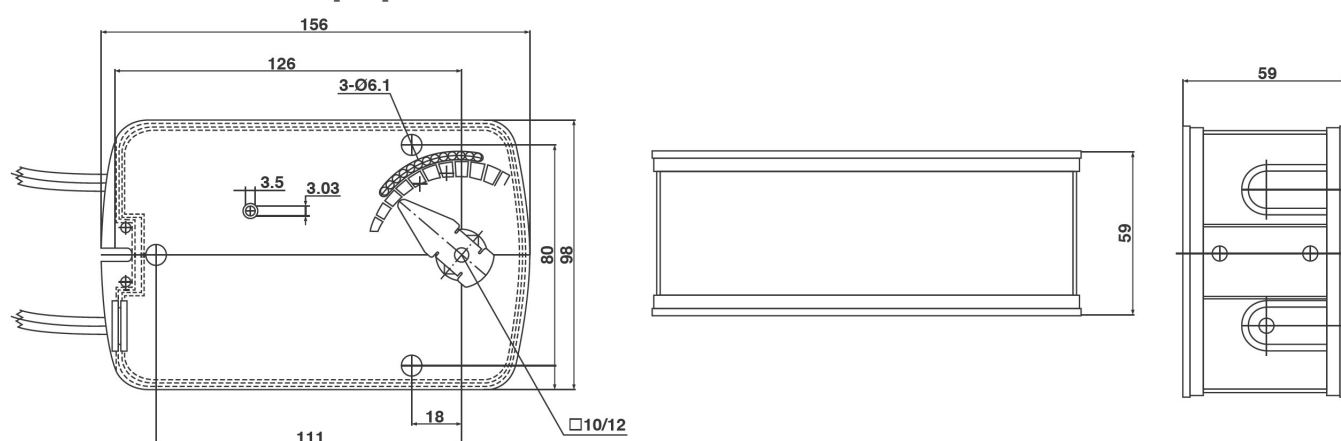
MODEL SELECTION TABLE

Model/type	Torque motor / spring return	Power supply	Running time	Auxiliary switches
SASA 1-15S	15 Nm	24 V _{AC/DC} ± 10%	< 30 s	2 x SPDT (fixed)
SASA 2-15S	15 Nm	230 V _{AC} ± 10%	< 30 s	2 x SPDT (Fixed)

SAFA – FIRE & SMOKE DAMPER ACTUATOR

15 Nm | 2-POINT CONTROL | WITHOUT SPRING RETURN

ACTUATOR DIMENSIONS [mm]



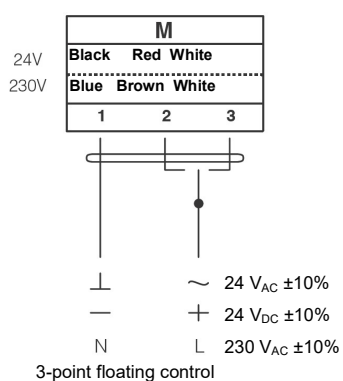
TECHNICAL SPECIFICATION

	SASA 1-15S	SASA 2-15S
Torque	15 Nm	15 Nm
Damper size	3.0 m ²	3.0 m ²
Shaft dimensions	Form fit 12 mm square	Form fit 12 mm square
Control signal	3-point floating control	3-point floating control
Power supply	24 V _{AC/DC} ± 10%	230 V _{AC} ± 10%
Frequency	50...60 Hz	50...60 Hz
Power consumption		
• In operation	8.2 W	5.2 W
• End position	3.5 W	3.5 W
Rated power	10.0 VA	10.0 VA
Electrical Connection	1 m Cable	1 m Cable
Auxiliary switches rating	3(1.5) A / 250 V _{AC}	3(1.5) A / 250 V _{AC}
Protection class	Class III ⚡	Class II ⚡
Angle of rotation	90° (95° mechanical limitation)	90° (95° mechanical limitation)
Weight	1.8 kg	1.9 kg
Durability	60,000 rotations	60,000 rotations
Sound level	40 dB	40 dB
IP protection class	IP54	IP54
Working temperature range	-20°C...50°C as per IEC 721-3-3	-20°C...50°C as per IEC 721-3-3
Storage temperature	-30°C...+60°C / IEC 721-3-2	-30°C...+60°C / IEC 721-3-2
Ambient humidity	5...95% rH (non condensing) / EN	5...95% rH (non condensing) / EN
Maintenance	Maintenance free	Maintenance free
Principle of operation	Type 1 (acc. to EN 60730-1)	Type 1 (acc. to EN 60730-1)
Electromagnetic compatibility	CE, UL 873 & ISO 9000 EN / EEC	CE, UL 873 & ISO 9000 EN / EEC

SAFA – FIRE & SMOKE DAMPER ACTUATOR

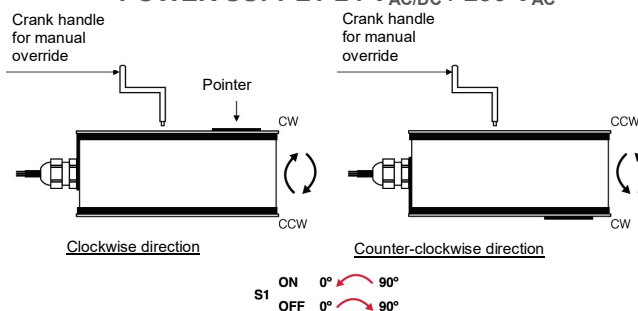
15 Nm | 2-POINT CONTROL | WITHOUT SPRING RETURN

WIRING DIAGRAM SASA...15S POWER SUPPLY AC/DC 24 V / AC 230V

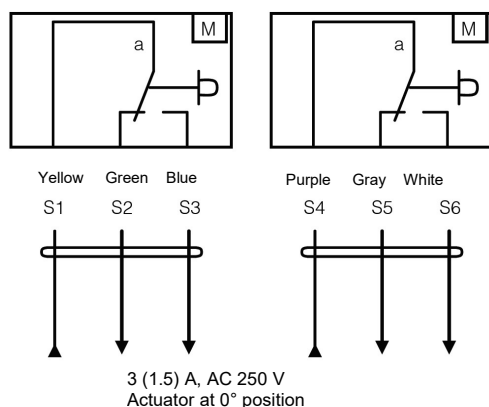


⚠ Connect via safety isolating transformer!

WIRING DIAGRAM SASA...15S POWER SUPPLY 24 V_{AC/DC} / 230 V_{AC}

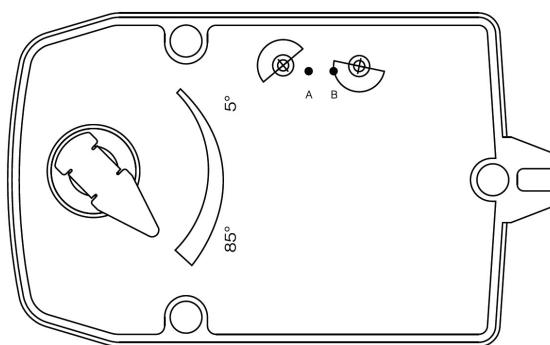


WIRING DIAGRAM SASA...15S AUXILIARY SWITCHES



AUXILIARY SWITCHES SASA...15S

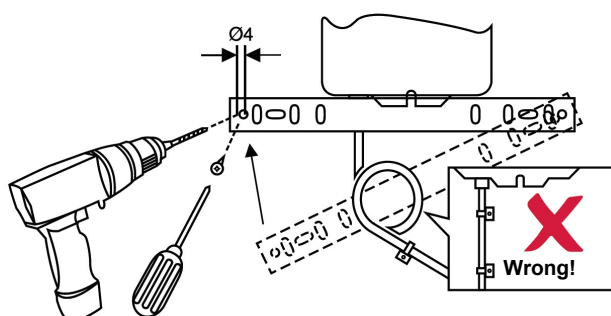
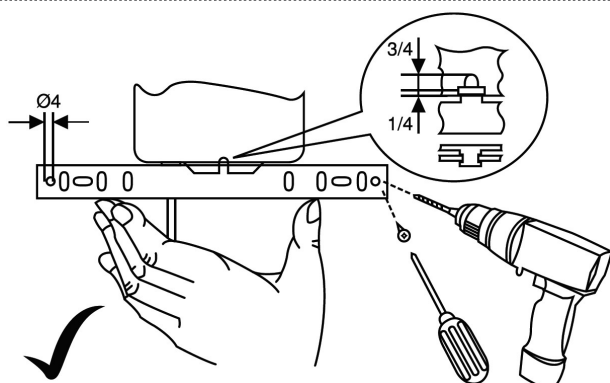
Auxiliary switch settings are 5° for switch a and 85° for switch b. Auxiliary switches are non adjustable.



SAFA – FIRE & SMOKE DAMPER ACTUATOR

15 Nm | 2-POINT CONTROL | WITHOUT SPRING RETURN

Installation instruction



⚠ IMPORTANT REMARKS

This actuator includes electrical and electronic components and may not be disposed as household garbage. Please consider the local valid legislation.

24 V_{AC/DC}: Connect via safety isolating transformer.

230 V_{AC}: To isolate from the main power supply, the system must incorporate a device which disconnects the phase conductor (with at least a 3mm contact gap.)

Consult NENUTEC representatives for specific requirements and material selections for your intended application.

The entire content of this technical datasheet is protected by copyright.
All rights are reserved ©.

The performance specifications are nominal and conform to acceptable industry standards. NenuTec shall not be liable for damages resulting from misapplication or misuse of its products.



CUSTOMISED VERSION

NENUTEC offers you actuators in customised versions, e.g. with your own brand name, with colour-coordinated applications and with your particular demand on request.

For further information please contact us or our local representative.

Nenutec Polska

00-236 Warszawa
ul. Świętojerska 5/7
tel.: +48-(0)-504-050225
nenutec@nenutec.pl