

## SAFA – FIRE & SMOKE DAMPER ACTUATOR

4 Nm (motor) / 3 Nm (spring return) | 2-POINT CONTROL | SPRING RETURN



The appearance of the product may differ from the illustration. Technical specifications are subject to change.

### SAFA SERIES

SAFA series Spring Return damper actuators are designed specifically for fire and smoke application. During normal operation, the actuator positions a damper according to the control signal. In the event of fire emergency, the spring return drives back actuator to its original position when there is power outage or thermal sensor is tripped.

- Torque: 4 Nm (motor) / 3 Nm (spring return)
- Damper size 0.6 m<sup>2</sup>
- Power supply 24 V<sub>AC/DC</sub> and 230 V<sub>AC</sub>
- Shaft dimensions – form fit 12 mm square
- Adapter supplied for from fit 8 or 10 mm square
- Selectable direction of rotation
- Actuator with 1 m connection cable.
- 2 Fixed auxiliary switches (SPDT)
- Manual override by crank handle when required
- Thermal sensor option available
- Anti rotation bracket provided

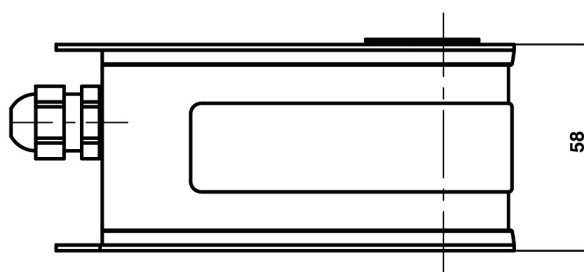
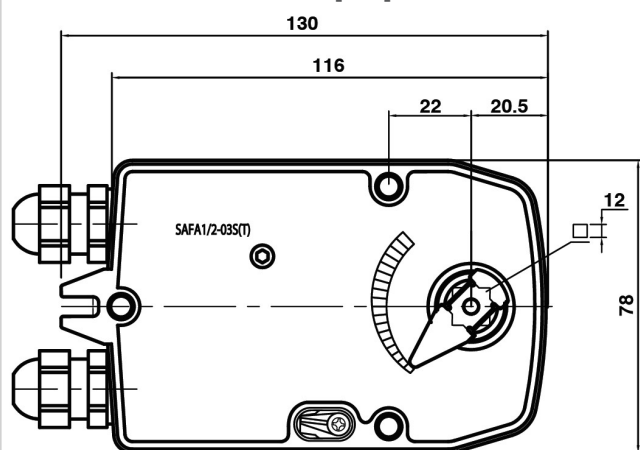
### MODEL SELECTION TABLE

Model/type	Torque motor / spring return	Power supply	Running time	Auxiliary switches	Thermoelectrical tripping device
SAFA 1-03S	4 Nm / 3 Nm	24 V <sub>AC/DC</sub> ± 10%	25...35 s (spring return <12 s)	2 x SPDT (fixed)	-
SAFA 1-03ST	4 Nm / 3 Nm	24 V <sub>AC/DC</sub> ± 10%	25...35 s (spring return <12 s)	2 x SPDT (fixed)	Yes
SAFA 2-03S	4 Nm / 3 Nm	230 V <sub>AC</sub> ± 10%	25...35 s (spring return <12 s)	2 x SPDT (fixed)	-
SAFA 2-03ST	4 Nm / 3 Nm	230 V <sub>AC</sub> ± 10%	25...35 s (spring return <12 s)	2 x SPDT (fixed)	Yes

## SAFA – FIRE & SMOKE DAMPER ACTUATOR

4 Nm (motor) / 3 Nm (spring return) | 2-POINT CONTROL | SPRING RETURN

ACTUATOR DIMENSIONS [mm]



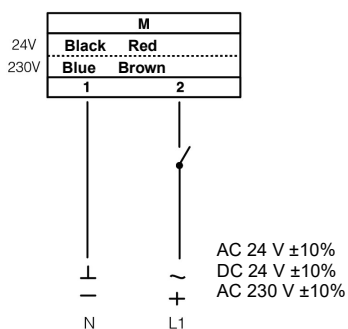
### TECHNICAL SPECIFICATION

	SAFA 1-03S (T)	SAFA 2-03S (T)
Torque	4 Nm (motor) / 3 Nm (spring return)	4 Nm (motor) / 3 Nm (spring return)
Damper size	0.6 m <sup>2</sup>	0.6 m <sup>2</sup>
Shaft dimensions	Form fit 12 mm square	Form fit 12 mm square
Control signal	Modulating control	
Power supply	24 V <sub>AC/DC</sub> ± 10%	230 V <sub>AC</sub> ± 10%
Frequency	50...60 Hz	50...60 Hz
Power consumption		
• In operation	7.0 W	7.0 W
• End position	2.5 W	2.5 W
Rated power	10.0 VA	10.0 VA
Electrical Connection	1 m Cable	1 m Cable
Auxiliary switches rating	3 (1.5) A, AC 250 V	3 (1.5) A, AC 250 V
Protection class	Class III ⚡	Class II ⚡
Angle of rotation	90° (95° mechanical limitation)	90° (95° mechanical limitation)
Trigger temperature of thermal sensor	> 72°C	> 72°C
Weight	1.8 kg	1.9 kg
Durability	60,000 rotations	60,000 rotations
Sound level	40 dB	40 dB
IP protection class	IP54	IP54
Working temperature range	-20°C...50°C as per IEC 721-3-3	-20°C...50°C as per IEC 721-3-3
Storage temperature	-30°C...+60°C / IEC 721-3-2	-30°C...+60°C / IEC 721-3-2
Ambient humidity	5...95% rH (non condensing) / EN	5...95% rH (non condensing) / EN
Maintenance	Maintenance free	Maintenance free
Principle of operation	Type 1 (acc. to EN 60730-1)	Type 1 (acc. to EN 60730-1)
Electromagnetic compatibility	CE, UL 873 & ISO 9000 EN / EEC	CE, UL 873 & ISO 9000 EN / EEC

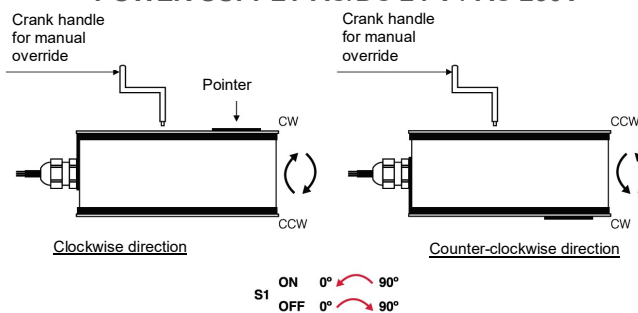
## SAFA – FIRE & SMOKE DAMPER ACTUATOR

4 Nm (motor) / 3 Nm (spring return) | 2-POINT CONTROL | SPRING RETURN

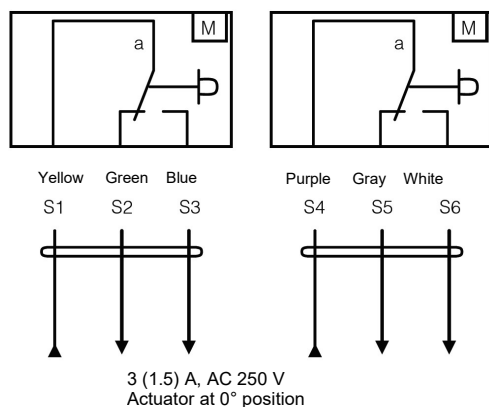
### WIRING DIAGRAM SAFA...03S (T) POWER SUPPLY AC/DC 24 V / AC 230V



### WIRING DIAGRAM SAFA...03S (T) POWER SUPPLY AC/DC 24 V / AC 230V

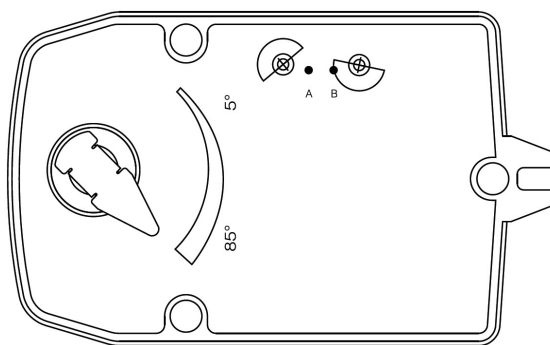


### WIRING DIAGRAM SAFA...03S (T) AUXILIARY SWITCHES



### AUXILIARY SWITCHES SAFA...03S (T)

Auxiliary are fixed at 5° for switch a and 85° for switch b. Auxiliary switches are non adjustable.



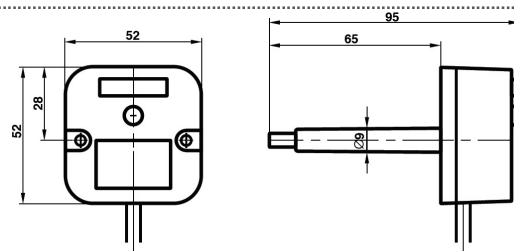
## SAFA – FIRE & SMOKE DAMPER ACTUATOR

4 Nm (motor) / 3 Nm (spring return) | 2-POINT CONTROL | SPRING RETURN

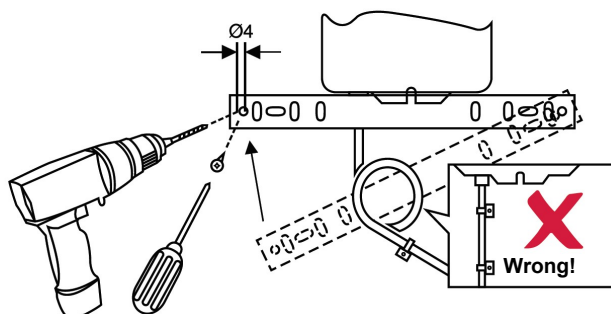
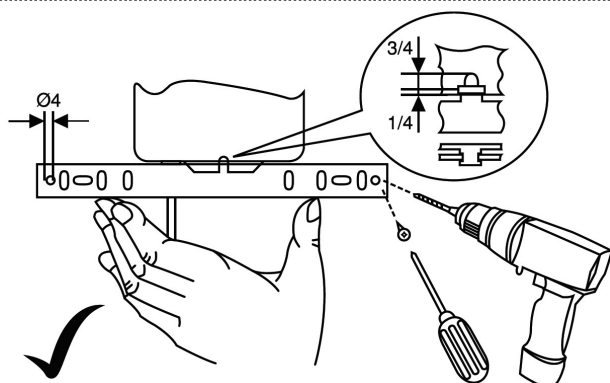
### ■ NTS72 thermal sensor

Thermal Sensor NTS 72 consist of both Ambient (TS1) and Duct sensor (TS2).

- TS1 will trip open when the ambient temperature rise above 72°C.
- TS2 will trip open when the duct temperature rise above 72°C.



### ■ Installation instruction



### ⚠ IMPORTANT REMARKS

This actuator includes electrical and electronic components and may not be disposed as household garbage. Please consider the local valid legislation.



24 V<sub>ADC</sub>: Connect via safety isolating transformer.

230 V<sub>AC</sub>: To isolate from the main power supply, the system must incorporate a device which disconnects the phase conductor (with at least a 3mm contact gap.)

Consult NENUTEC representatives for specific requirements and material selections for your intended application.

The entire content of this technical datasheet is protected by copyright. All rights are reserved ©.

The performance specifications are nominal and conform to acceptable industry standards. Nenutec shall not be liable for damages resulting from misapplication or misuse of its products.

### CUSTOMISED VERSION

NENUTEC offers you actuators in customised versions, e.g. with your own brand name, with colour-coordinated applications and with your particular demand on request.

For further information please contact us or our local representative.

### Nenutec Polska

00-236 Warszawa  
ul. Świętojerska 5/7  
tel.: +48-(0)-504-050225  
nenutec@nenutec.pl