

## COMPACT DAMPER ACTUATOR

2 Nm | 2/3 POINT CONTROL



The appearance of the product may differ from the illustration. Technical specifications are subject to change.

### NCCA...02 SERIES

NCCA series is a compact, low torque actuator designed for small air dampers in HVAC systems. It is commonly used for precise airflow control in Small Damper, By-pass Damper, Fabric Duct, VAV systems, Air Handling Unit etc. Its compact design makes it ideal for tight spaces, ensuring reliable performance in small-scale ventilation and air distribution systems.

- Torque 2 Nm
- Damper size 0.4 m<sup>2</sup>
- Power supply AC/DC 24V or AC 100...240V
- Shaft dimensions - Ø 6...13 mm / □ 6/8/10 mm\*
- Form fit 10 x 10mm - Produced to order
- Form fit 12 x 12mm - Produced to order
- Minimum shaft length 35 mm
- Adjustable angle of rotation
- Selectable direction of rotation by CW/CCW button
- Manual over-ride push button
- The anti-rotation bracket is included in the scope of delivery
- Customised versions on request.

#### MODEL SELECTION TABLE

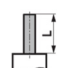
Torque	Running time	Power supply	Auxiliary switch	Model/Type
2 Nm	< 50 s	AC/DC 24 V ± 10%	—	NCCA 1-02
2 Nm	< 50 s	AC 100...230 V	—	NCCA 2-02

## COMPACT DAMPER ACTUATOR




2 Nm | 2/3 POINT CONTROL

### ACTURATOR DIMESNIIONS [mm]

#### Shaft length

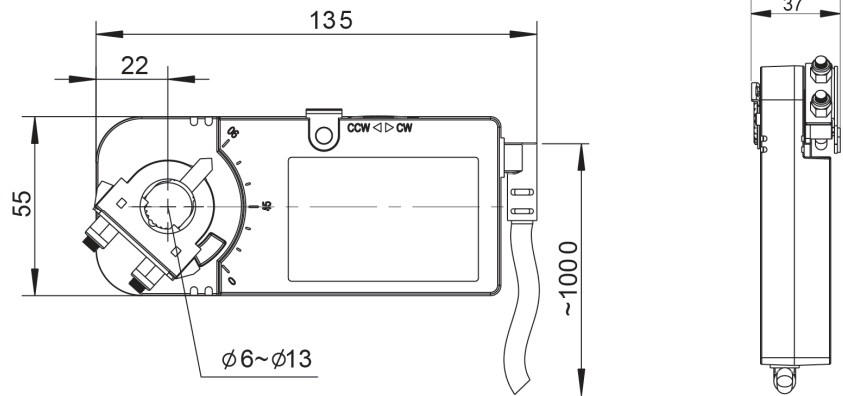
	Min. 35
---	---------

#### Clamping range



		
6...13	6/8/10	6...13

#### Remarks:

Form fit 10 x 10mm - Produced to order  
Form fit 12 x 12mm - Produced to order



### TECHNICAL SPECIFICATION

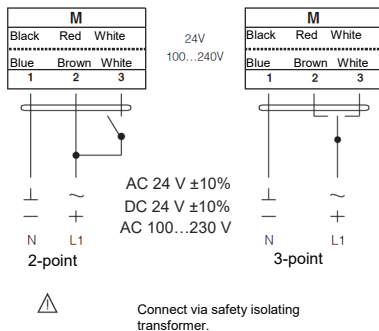
	NCCA 1-02	NCCA 2-02
Torque	2 Nm	2 Nm
Damper size	0,4 m <sup>2</sup>	0,4 m <sup>2</sup>
Shaft dimensions	Ø 6...13 mm / □ 6/8/10 mm*	
Form fit options	Form fit 10 x 10mm - Produced to order Form fit 12 x 12mm - Produced to order	
Power supply	AC/DC 24 V ± 10%	AC 100...230 V
Frequency	50...60 Hz	50...60 Hz
Control signal (input)	2/3-point control	2/3-point control
Power consumption		
– Operating	4.0 W	4.0 W
– At end position	1.0 W	1.0 W
Rated power	6.0 VA	6.0 VA
Protection class	III 	II 
Electrical wiring	1 m Cable	1 m Cable
Angle of rotation	90° (95° mechanical limitation)	90° (95° mechanical limitation)
Weight	0.3 kg	0.3 kg
Durability	60,000 rotations	60,000 rotations
Sound level	40 dB	40 dB
Protection degree	IP54	IP54
Working temperature range	-20°C...50°C as per IEC 721-3-3	-20°C...50°C as per IEC 721-3-3
Storage temperature	-30°C...+60°C / IEC 721-3-2	-30°C...+60°C / IEC 721-3-2
Humidity	5...90% rH (non condensing) / EN	5...90% rH (non condensing) / EN
Maintenance	Maintenance free	Maintenance free
Principle of operation	Type 1 (acc. to EN 60730-1)	Type 1 (acc. to EN 60730-1)
Electromagnetic compatibility	CE & ISO 9000 to EN / EEC	CE & ISO 9000 to EN / EEC

\*Note that shaft dimension has a tolerance offset of ± 0.2mm.

## COMPACT DAMPER ACTUATOR

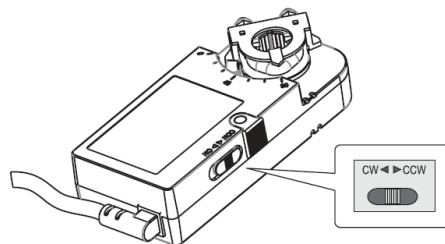
### 2 Nm | 2/3 POINT CONTROL

Wiring diagram NCCA...02  
Power supply AC/DC 24 V / AC 100...230 V

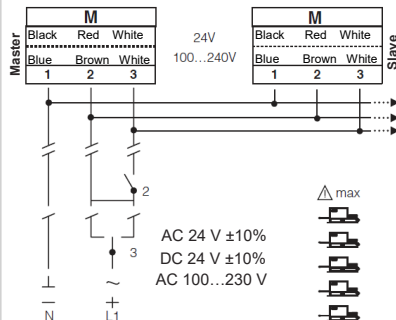


#### ■ Changing direction of rotation NCCA ...02

Default factory setting: CW. Direction of rotation can be change by toggling between CW/ CCW switch on the actuator's housing.



Wiring Diagram NCCA...02  
Parallel connection



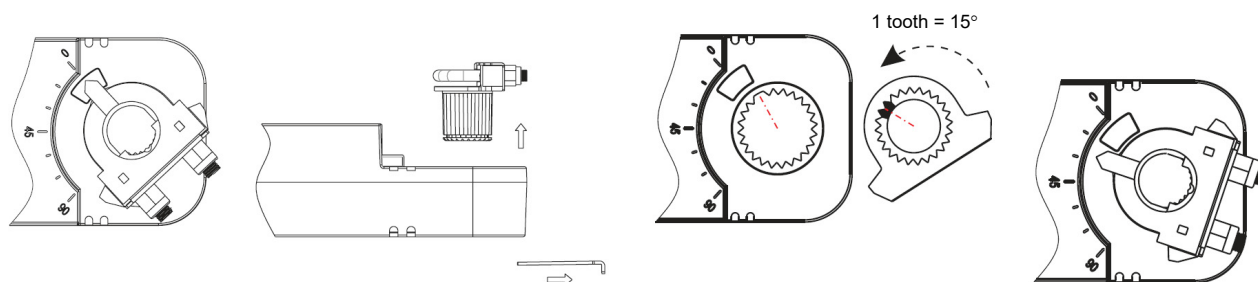
#### ■ Note

Parallel connection of maximum five NCCA...02 is possible.  
Power consumption must be observed!

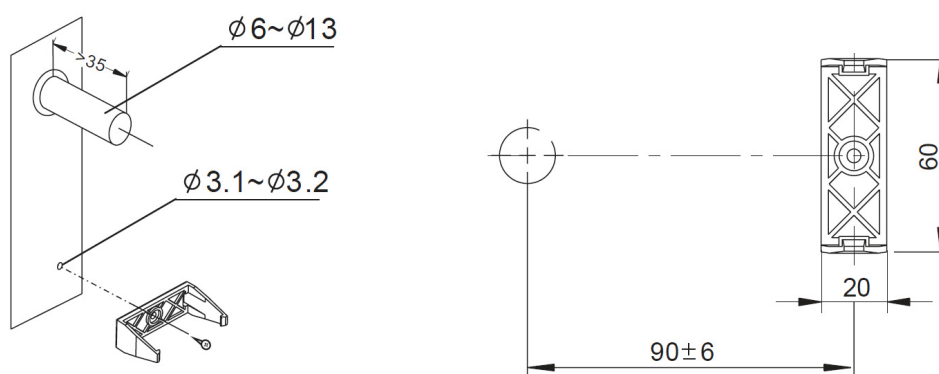
## COMPACT DAMPER ACTUATOR

2 Nm | 2/3 POINT CONTROL

### ■ Limiting angle rotation NCCA...02



### ■ Installation instruction



### ⚠ IMPORTANT REMARKS

This actuator includes electrical and electronic components and may not be disposed as household waste. Please consider the local valid legislation.

AC/DC 24 V: Connect via safety isolating transformer.

AC 230 V: To isolate from the main power supply, the system must incorporate a device which disconnects the phase conductor (with at least a 3 mm contact gap.)

Consult NENUTEC representatives for specific requirements and material selections for your intended application. The entire content of this technical datasheet is protected by copyright. All rights are reserved ©.

The performance specifications are nominal and conform to acceptable industry standards. Nenutec shall not be liable for damages resulting from misapplication or misuse of its products.



### IMPORTANT REMARK

The NENUTEC NCCA... actuator series can be equipped with a variety of NENUTEC products.

Contact NENUTEC representatives or factory for the specific requirements and material selection for your intended application.

### CUSTOMISED VERSION

NENUTEC offers you actuators in customised versions, e.g. with your own brand name, with colour-coordinated applications and with your particular demand on request.

For further information please contact us or our local representative.

### Nenutec Polska

00-236 Warszawa  
ul. Świętojerska 5/7  
tel.: +48-(0)-504-050225  
nenutec@nenutec.pl