

COMPACT VALVE ACTUATOR

2 Nm | MODULATING CONTROL



The appearance of the product may differ from the illustration. Technical specifications are subject to change.

NCBM...02 SERIES

NCBM series is a compact, low torque valve actuator designed and produced to use in stationary heating, ventilation and air-conditioning systems.

Its compact design makes it ideal for tight spaces, ensuring reliable performance.

Our wide range of standard valve actuators has been developed to operate and position ball valves of different sizes.

- Torque 2 Nm
- Valve size DN15(1/2") / DN20(3/4")
- Power supply AC/DC 24V
- Control modulating DC 0(2)...10 V
- Running time < 50 s
- Shaft dimensions - □ 9.0 mm (fixed)
- Adjustable angle of rotation
- Selectable direction of rotation by CW/CCW button
- Manual over-ride push button
- Customised versions on request.

MODEL SELECTION TABLE

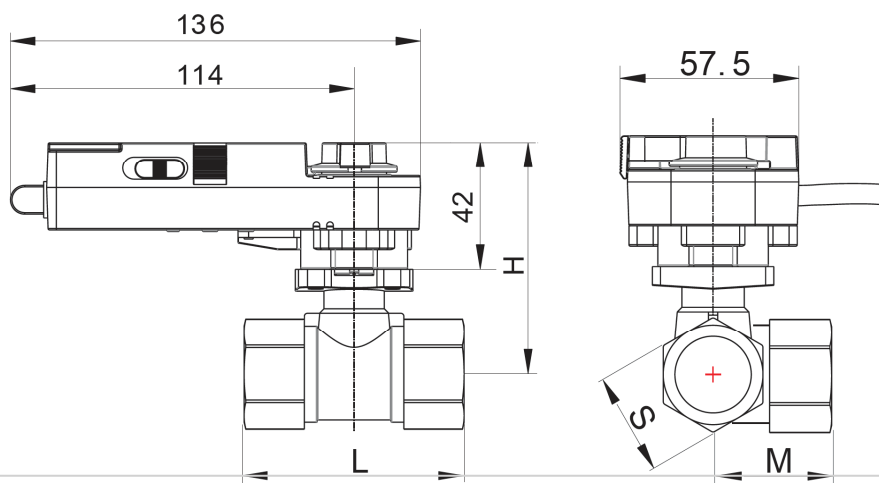
Torque	Running time	Power supply	Auxiliary switch	Model/Type
2 Nm	< 50 s	AC/DC 24 V ± 10%	—	NCBM 1.2-02 LN
2 Nm	< 50 s	AC/DC 24 V ± 10%	—	NCBM 1.2-02 HN

COMPACT VALVE ACTUATOR

2 Nm | MODULATING CONTROL

ACTURATOR DIMESNIIONS [mm]

		DN15	DN20
H	LN	72	77
	HN	108	113
L		60	67
S		25	32
M		30	32



TECHNICAL SPECIFICATION

NCBM 1.2-02

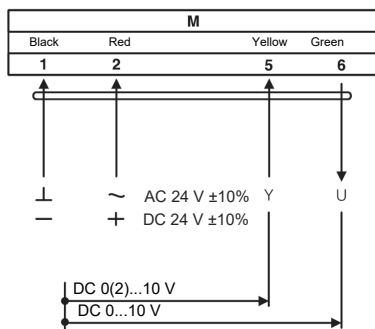
Torque	2 Nm
Valve size	DN15(½") / DN20(¾")
Shaft dimensions	□ 9.0 mm (fixed)
Power supply	AC/DC 24 V ± 10%
Frequency	50...60 Hz
Control signal (input)	DC 0(2)...10 V
Position signal (output)	DC 0...10 V
Power consumption	
– Operating	4.0 W
– At end position	1.0 W
Rated power	6.0 VA
Electrical wiring	1 m Cable
Protection class	III ⚡
Angle of rotation	90° (95° mechanical limitation)
Weight	0.3 kg
Durability	60,000 rotations
Sound level	40 dB
Protection degree	IP54
Working temperature range	-20°C...50°C as per IEC 721-3-3
Storage temperature	-30°C...+60°C / IEC 721-3-2
Humidity	5...90% rH (non condensing) / EN
Maintenance	Maintenance free
Principle of operation	Type 1 (acc. to EN 60730-1)
Electromagnetic compatibility	CE & ISO 9000 to EN / EEC

*Note that shaft dimension has a tolerance offset of ± 0.2mm.

COMPACT VALVE ACTUATOR

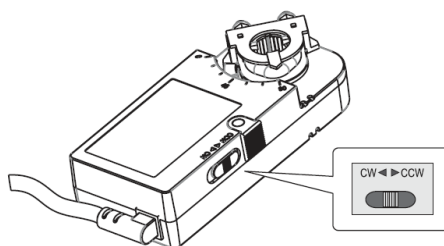
2 Nm | MODULATING CONTROL

Wiring diagram NCBM...02
Power supply AC/DC 24 V

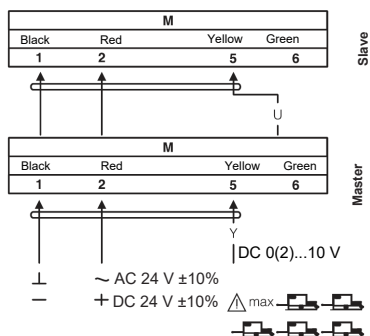


■ Changing direction of rotation NCBM ...02

Default factory setting: CW. Direction of rotation can be change by toggling between CW/CCW switch on the actuator's housing.



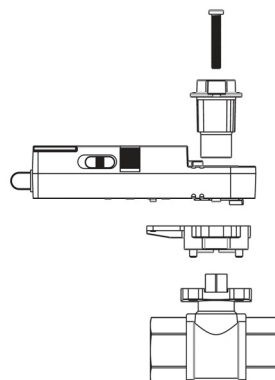
Wiring Diagram NCBM...02
Parallel connection



■ Note

Parallel connection of maximum five NCBM...02 is possible.
Power consumption must be observed!

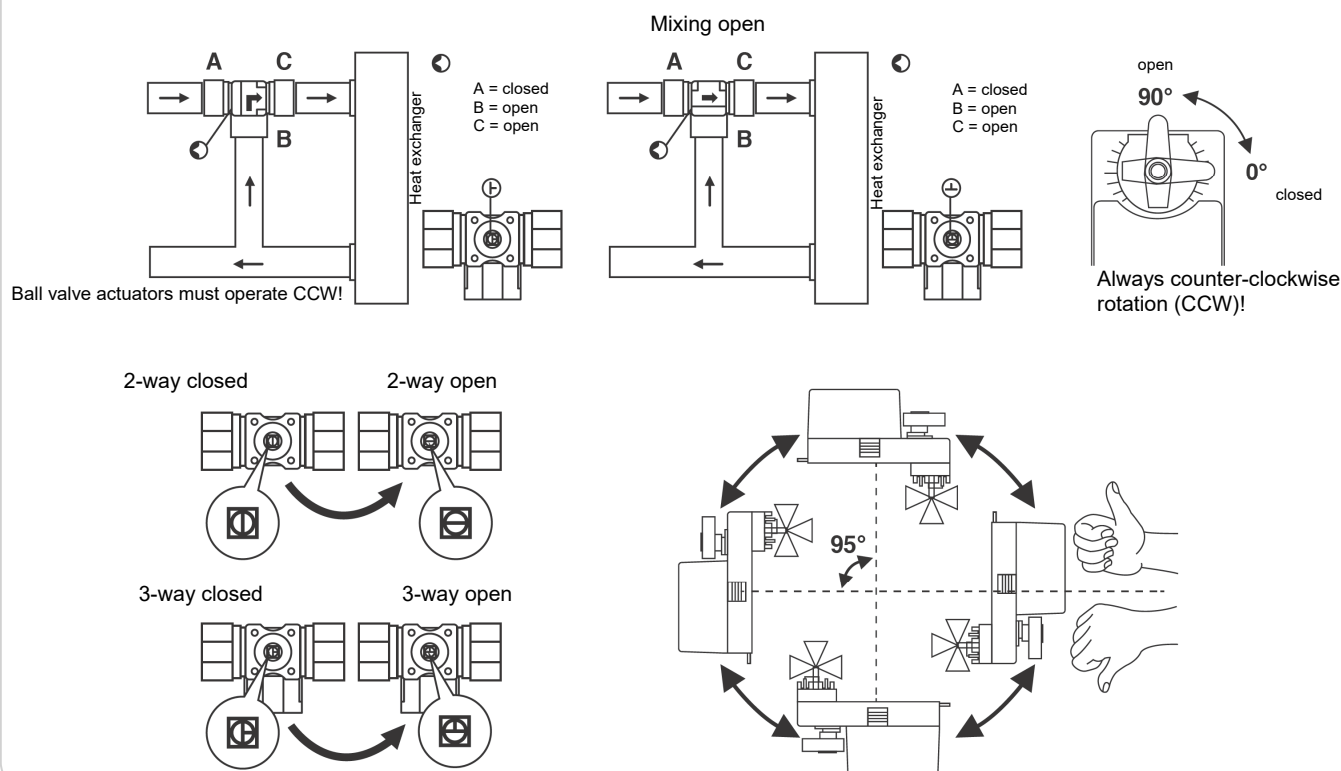
■ Installation instruction



COMPACT VALVE ACTUATOR

2 Nm | MODULATING CONTROL

Installation instruction



IMPORTANT REMARKS

This actuator includes electrical and electronic components and may not be disposed as household waste. Please consider the local valid legislation.

AC/DC 24 V: Connect via safety isolating transformer.

AC 230 V: To isolate from the main power supply, the system must incorporate a device which disconnects the phase conductor (with at least a 3 mm contact gap.)

Consult NENUTEC representatives for specific requirements and material selections for your intended application. The entire content of this technical datasheet is protected by copyright. All rights are reserved ©.

The performance specifications are nominal and conform to acceptable industry standards. Nenutec shall not be liable for damages resulting from misapplication or misuse of its products.

IMPORTANT REMARK

The NENUTEC NCBM... actuator series can be equipped with a variety of NENUTEC products.

Contact NENUTEC representatives or factory for the specific requirements and material selection for your intended application.

CUSTOMISED VERSION

NENUTEC offers you actuators in customised versions, e.g. with your own brand name, with colour-coordinated applications and with your particular demand on request.

For further information please contact us or our local representative.

Nenutec Polska

00-236 Warszawa
ul. Świętojerska 5/7
tel.: +48-(0)-504-050225
nenutec@nenutec.pl