

## NACA – STANDARD DAMPER ACTUATOR

20 Nm | 2-POINT & 3-POINT CONTROL



The appearance of the product may differ from the illustration. Technical specifications are subject to change.

### NACA...20 (S) SERIES

NACA standard damper actuators are specially designed and produced for applications in the HVAC Systems. Our wide range of Nenutec standard damper actuators has been developed to operate and position air dampers of different sizes.

- Torque: 20 Nm
- Damper size 4.0 m<sup>2</sup>
- Power supply 24 V<sub>AC/DC</sub> and 230 V<sub>AC</sub>
- Shaft dimensions – Ø 12...20 mm / square 11...14 mm
- Minimum shaft length 45 mm
- Adjustable angle of rotation
- Direction of rotation selectable by reversing actuator during installation
- Actuator with 1 m connection cable
- Optional 2 adjustable SPDT auxiliary switches
- Manual over ride by push button when required
- Fits with NVCB 9000 valve bracket

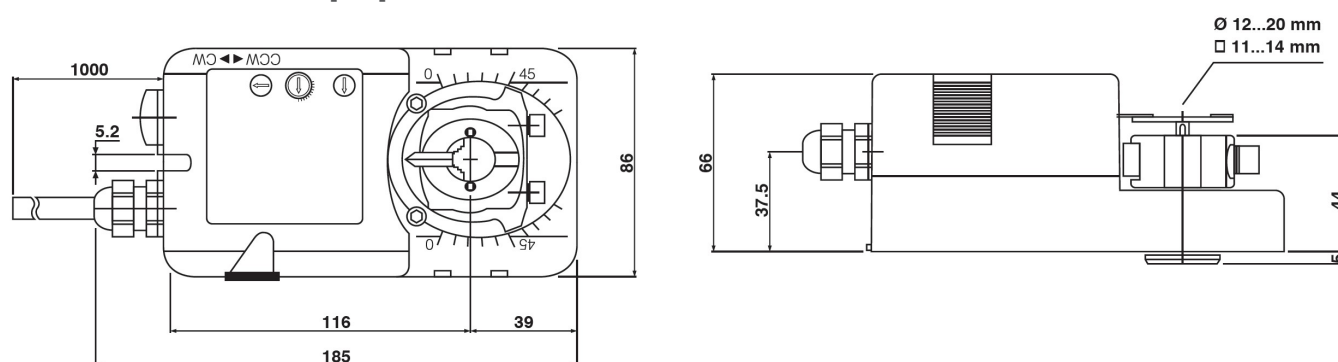
#### MODEL SELECTION TABLE

Model/type	Torque	Power supply	Running time	Auxiliary switch
NACA 1-20	20 Nm	24 V <sub>AC/DC</sub> ± 10%	100...150 s	-
NACA 1-20S	20 Nm	24 V <sub>AC/DC</sub> ± 10%	100...150 s	2 x SPDT (Adjustable)
NACA 2-20	20 Nm	230 V <sub>AC</sub> ± 10%	100...150 s	-
NACA 2-20S	20 Nm	230 V <sub>AC</sub> ± 10%	100...150 s	2 x SPDT (Adjustable)

## NACA – STANDARD DAMPER ACTUATOR

20 Nm | 2-POINT & 3-POINT CONTROL

ACTUATOR DIMENSIONS [mm]



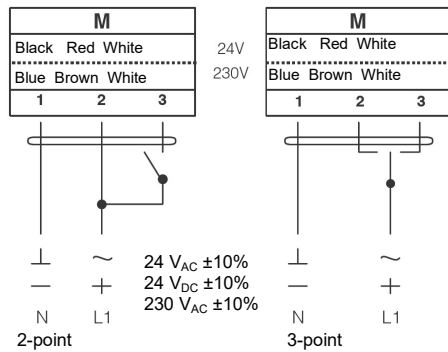
### TECHNICAL SPECIFICATION

	NACA 1-10 (S)	NACA 2-10 (S)
Torque	20 Nm	20 Nm
Damper size	4.0 m <sup>2</sup>	4.0 m <sup>2</sup>
Shaft dimensions	Ø 12...20 mm / □ 11...14 mm	Ø 12...20 mm / □ 11...14 mm
Power supply	24 V <sub>AC/DC</sub> ± 10%	230 V <sub>AC</sub> ± 10%
Frequency	50...60Hz	50...60Hz
Control signal	2- & 3-point control	2- & 3-point control
Power consumption		
• In operation	8.0 W	8.0 W
• End position	2.0 W	2.0 W
Rated power	8.0 VA	8.0 VA
Electrical Connection	1 m Cable	1 m Cable
Auxiliary switches rating	3 (1.5) A / 250 V <sub>AC</sub>	3 (1.5) A / 250 V <sub>AC</sub>
Protection class	Class III ⚡	Class II ⚡
Angle of rotation	90° (95° mechanical limitation)	90° (95° mechanical limitation)
Weight	<1.2 kg	<1.2 kg
Durability	60,000 rotations	60,000 rotations
Sound level	45 dB	45 dB
IP protection class	IP54	IP54
Working temperature range	-20°C...50°C as per IEC 721-3-3	-20°C...50°C as per IEC 721-3-3
Storage temperature	-30°C...+60°C / IEC 721-3-2	-30°C...+60°C / IEC 721-3-2
Ambient humidity	5...95% rH (non condensing) / EN	5...95% rH (non condensing) / EN
Maintenance	Maintenance free	Maintenance free
Principle of operation	Type 1 (acc. to EN 60730-1)	Type 1 (acc. to EN 60730-1)
Electromagnetic compatibility	CE, UL 873 & ISO 9000 EN / EEC	CE, UL 873 & ISO 9000 EN / EEC

## NACA – STANDARD DAMPER ACTUATOR

20 Nm | 2-POINT & 3-POINT CONTROL

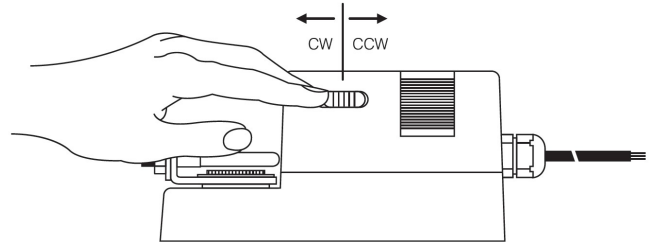
### WIRING DIAGRAM NACA...20 (S) POWER SUPPLY 24 V<sub>AC/DC</sub> / 230V<sub>AC</sub>



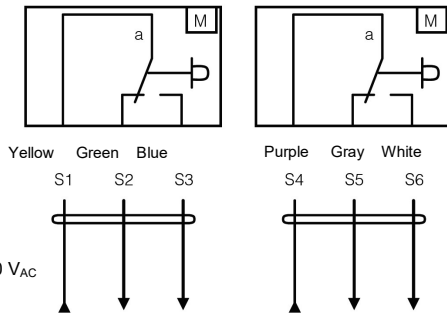
⚠ Connect via safety isolating transformer!

### Changing direction of rotation NACA...20 (S)

Factory setting: clockwise (CW). Direction of rotation can be changed by toggling between CW/CCW switch on the actuator housing.

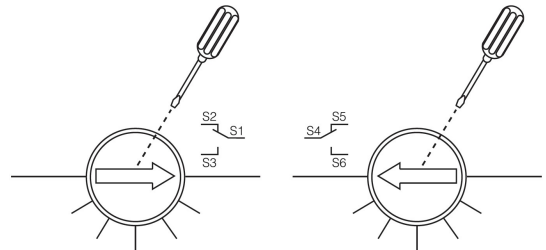


### WIRING DIAGRAM NACA...20 (S) AUXILIARY SWITCH

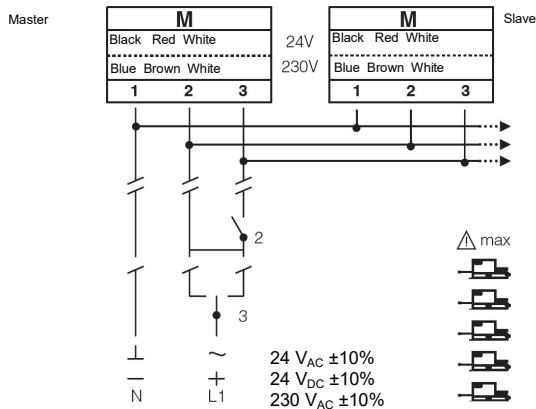


### AUXILIARY SWITCHES NACA...20 (S)

Auxiliary switch settings are by factory 5° for switch a and 85° for switch b. The auxiliary switches can be adjusted between 0°...90° as required.



### WIRING DIAGRAM NACA...20 (S) PARALLEL CONNECTION



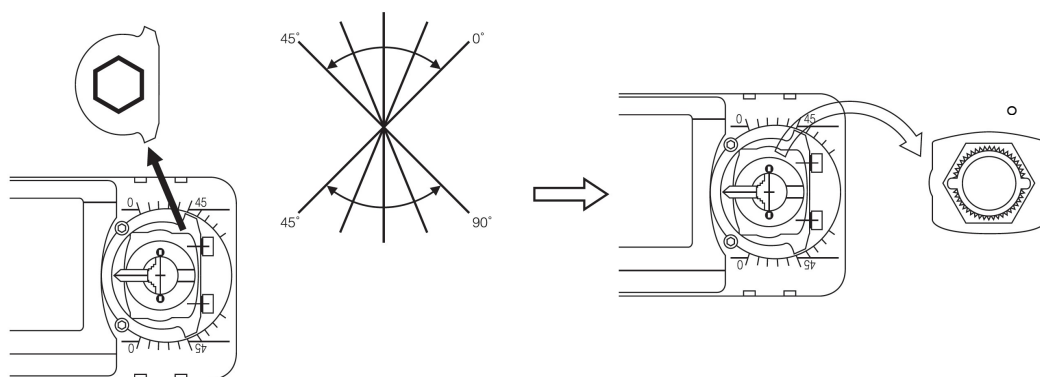
### REMARK

Parallel connection of maximum 5 NACA...20 (S) actuators is possible. Power consumption must be observed!

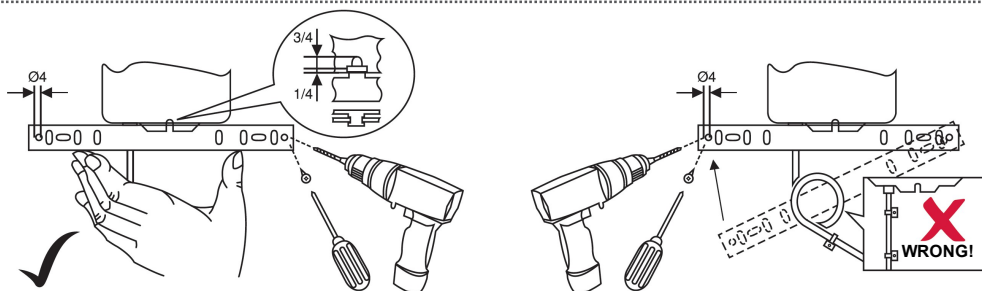
## NACA – STANDARD DAMPER ACTUATOR

20 Nm | 2-POINT & 3-POINT CONTROL

### Limiting angle of rotation



### Installation instruction



### IMPORTANT REMARKS

This actuator includes electrical and electronic components and may not be disposed as household waste. Please consider the local valid legislation.

24 V<sub>AC/DC</sub>: Connect via safety isolating transformer.

230 V<sub>AC</sub>: To isolate from the main power supply, the system must incorporate a device which disconnects the phase conductor (with at least a 3mm contact gap.)

Consult NENUTEC representatives for specific requirements and material selections for your intended application. The entire content of this technical datasheet is protected by copyright. All rights are reserved ©.

The performance specifications are nominal and conform to acceptable industry standards. NenuTec shall not be liable for damages resulting from misapplication or misuse of its products.



### CUSTOMISED VERSION

NENUTEC offers you actuators in customised versions, e.g. with your own brand name, with colour-coordinated applications and with your particular demand on request.

For further information please contact us or our local representative.

### Nenutec Polska

00-236 Warszawa  
ul. Świętojerska 5/7  
tel.: +48-(0)-504-050225  
nenutec@nenutec.pl