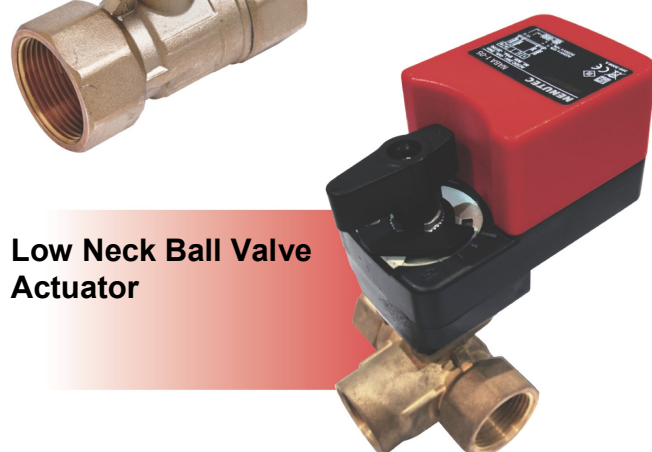


NABM – STANDARD BALL VALVE ACTUATOR

5 Nm | MODULATING CONTROL



High Neck Ball Valve Actuator



Low Neck Ball Valve Actuator

The appearance of the product may differ from the illustration. Technical specifications are subject to change.

NABM... SERIES

NABM series standard valve actuators are especially designed and produced for applications in the HVAC systems. Our wide range of standard valve actuators has been developed to operate and position ball valves of different sizes.

- Torque: 5 Nm
- Valve size DN15 (1/2") / DN20 (3/4") / DN25 (1") / DN32 (1 1/4")
- Power supply 24V_{AC/DC}
- Sterowanie analogowe 0(2)...10 V DC
- Shaft dimension – 9 mm square (fixed)
- Direction of rotation selectable by switch
- Actuator with 1 m connection cable
- Available in high neck and low neck versions

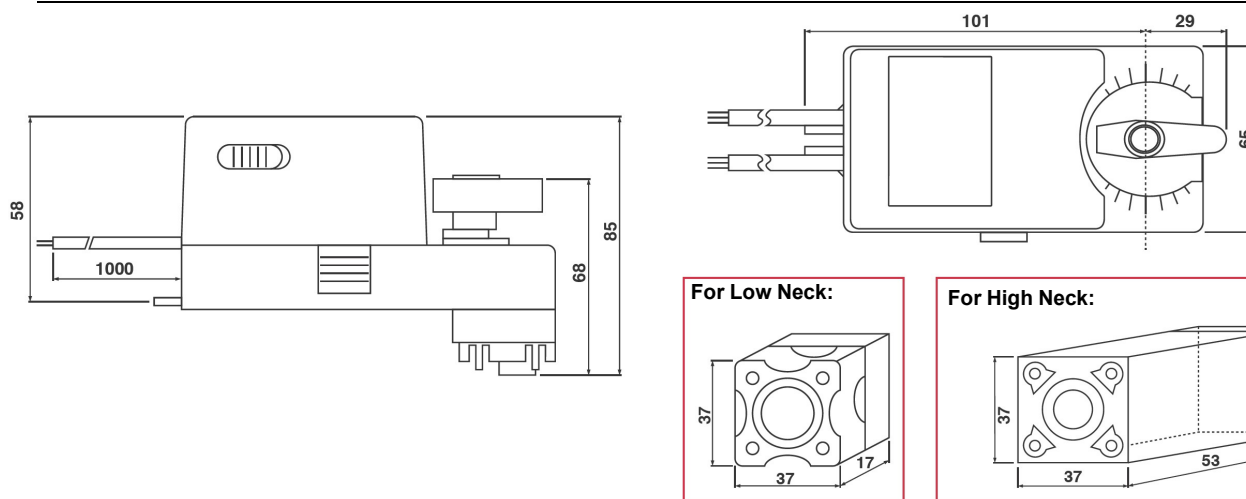
MODEL SELECTION TABLE

Model/type	Torque	Power supply	Running time	Auxiliary switch
NABM 1.2-05 LN	5 Nm	24 V _{AC/DC} ± 10%	70...100 s	-
NABM 1.2-05 HN	5 Nm	24 V _{AC/DC} ± 10%	70...100 s	-

NABM – STANDARD BALL VALVE ACTUATOR

5 Nm | MODULATING CONTROL

ACTUATOR DIMENSIONS [mm]



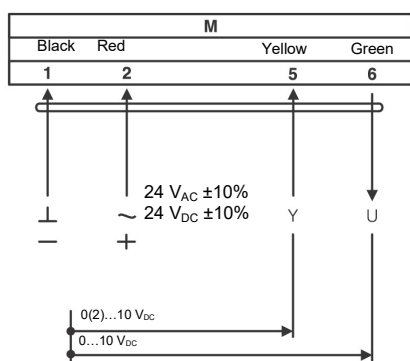
TECHNICAL SPECIFICATION

NABM 1.2-05	
Moment obrotowy	5 Nm
Valve size	DN15 (½") / DN20 (¾") / DN25 (1") / DN32 (1¼")
Shaft dimensions	□ 9.0 mm (fixed)
Power supply	24 V _{AC/DC} ± 10%
Frequency	50...60Hz
Control signal (Input)	0(2)... 10 V _{DC}
Position signal (output)	0...10 V _{DC}
Power consumption	
• In operation	4.0 W
• End position	2.0 W
Rated power	14.0 VA
Electrical Connection	1 m Cable
Auxiliary switch rating	3 (1.5) A / 250 V _{AC}
Protection class	Class III ⬢
Angle of rotation	90° (95° mechanical limitation)
Weight	<0.8 kg
Durability	60,000 rotations
Sound level	40 dB
IP protection class	IP54
Working temperature range	-20°C...50°C as per IEC 721-3-3
Storage temperature	-30°C...+60°C / IEC 721-3-2
Ambient humidity	5...95% rH (non condensing) / EN
Maintenance	Maintenance free
Principle of operation	Type 1 (acc. to EN 60730-1)
Electromagnetic compatibility	CE & ISO 9000 to EN / EEC

NABM – STANDARD BALL VALVE ACTUATOR

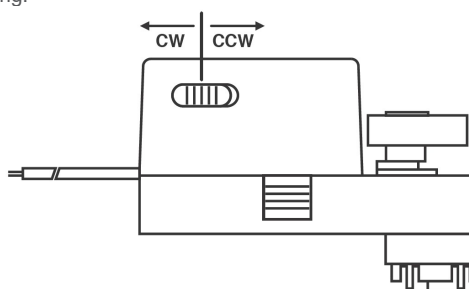
5 Nm| MODULATING CONTROL

WIRING DIAGRAM NABM... POWER SUPPLY 24 V_{AC/DC}

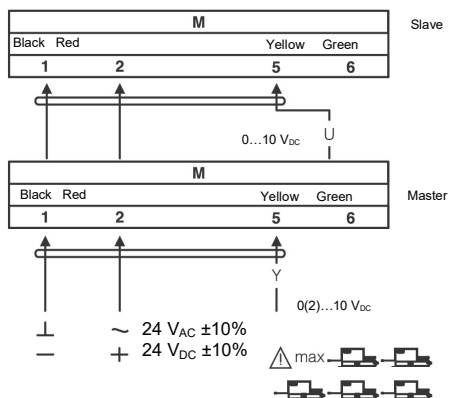


CHANGING DIRECTION OF ROTATION NABM...

Factory setting: clockwise (CW). Direction of rotation can be changed by toggling between CW/CCW switch on the actuator housing.



WIRING DIAGRAM NABM... PARALLEL CONNECTION

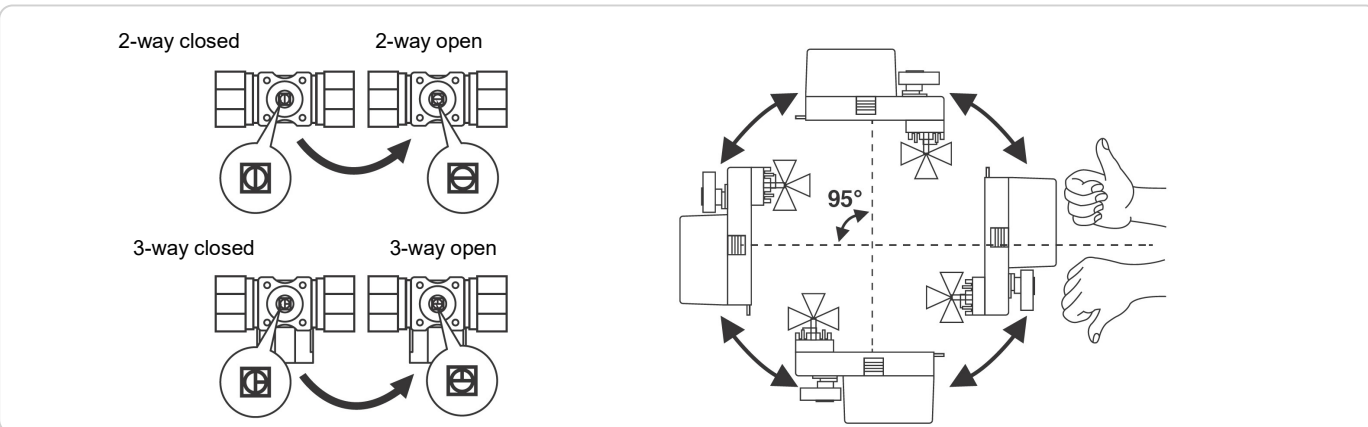
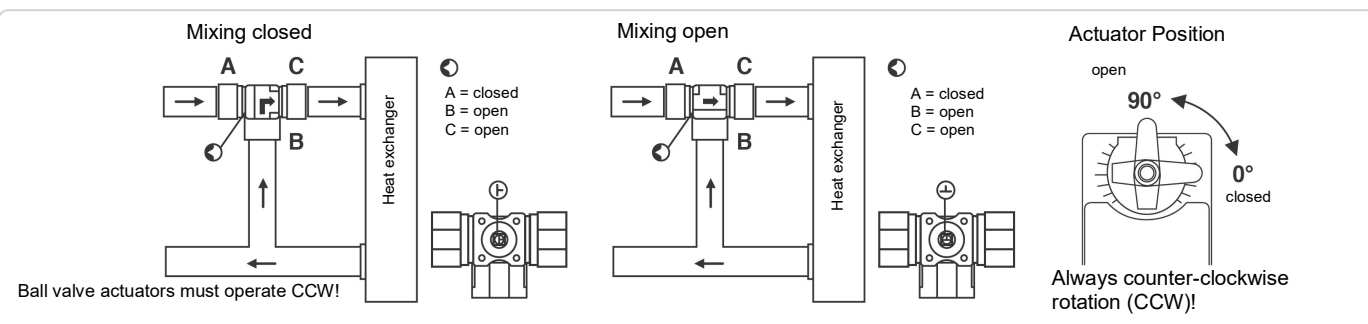


REMARK

During parallel operation, the output signal (terminal 6, 0...10 V_{DC} of the master actuator must be connected to terminal 5 of the next slave actuator.

NABM – STANDARD BALL VALVE ACTUATOR

5 Nm| MODULATING CONTROL



IMPORTANT REMARKS

This actuator includes electrical and electronic components and may not be disposed as household waste. Please consider the local valid legislation.

24 V_{AC/DC}: Connect via safety isolating transformer.

230 V_{AC}: To isolate from the main power supply, the system must incorporate a device which disconnects the phase conductor (with at least a 3mm contact gap.)

Consult NENUTEC representatives for specific requirements and material selections for your intended application. The entire content of this technical datasheet is protected by copyright. All rights are reserved ©.

The performance specifications are nominal and conform to acceptable industry standards. Nenuotec shall not be liable for damages resulting from misapplication or misuse of its products.



CUSTOMISED VERSION

NENUTEC offers you actuators in customised versions, e.g. with your own brand name, with colour-coordinated applications and with your particular demand on request.

For further information please contact us or our local representative.

Nenuotec Polska

00-236 Warszawa
ul. Świętojerska 5/7
tel.: +48-(0)-504-050225
nenuotec@nenuotec.pl